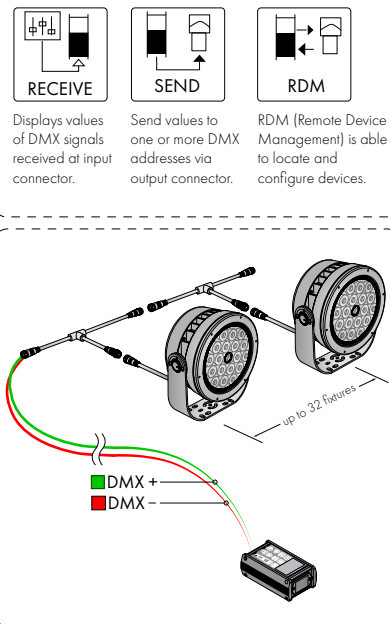
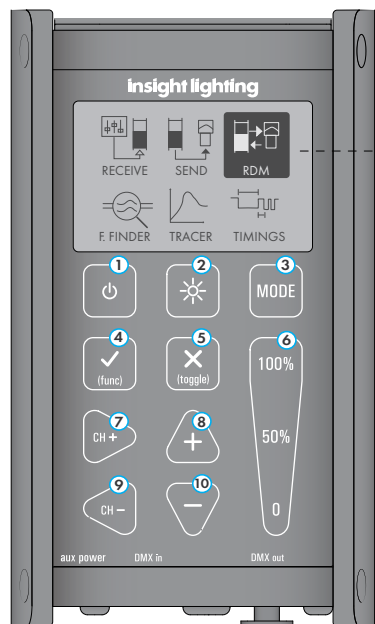


INTRODUCTION

Introducing the RDM Tool from Insight Lighting. This versatile tool is a must for anyone involved with DMX fixture installation. The following instructions will get you familiar with the device, walk you through how to get started and show you how to use the RDM mode.

The physical keys of the device are as followed:

- 1 POWER KEY
- 2 BACK LIGHT
- 3 MODE SELECT
- 4 CONFIRM KEY
- 5 CANCEL, BACK BUTTON
- 6 DMX LEVEL SET
- 7 DMX CHANNEL +, RIGHT ARROW
- 8 UP ARROW
- 9 DMX CHANNEL -, LEFT ARROW
- 10 DOWN ARROW



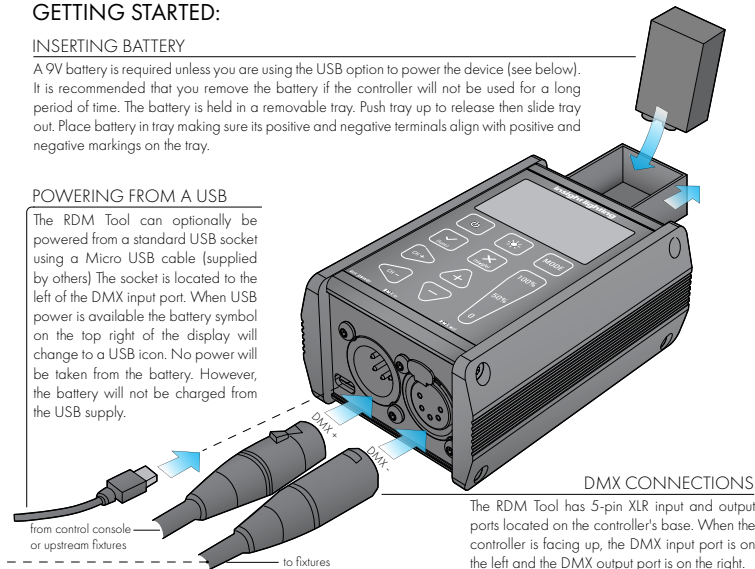
GETTING STARTED:

INSERTING BATTERY

A 9V battery is required unless you are using the USB option to power the device (see below). It is recommended that you remove the battery if the controller will not be used for a long period of time. The battery is held in a removable tray. Push tray up to release then slide tray out. Place battery in tray making sure its positive and negative terminals align with positive and negative markings on the tray.

POWERING FROM A USB

The RDM Tool can optionally be powered from a standard USB socket using a Micro USB cable (supplied by others). The socket is located to the left of the DMX input port. When USB power is available the battery symbol on the top right of the display will change to a USB icon. No power will be taken from the battery. However, the battery will not be charged from the USB supply.

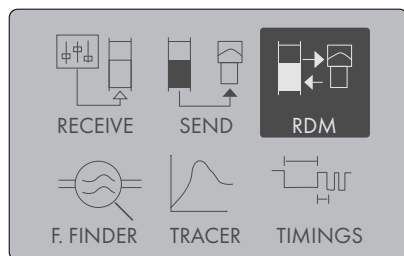


DMX CONNECTIONS

The RDM Tool has 5-pin XLR input and output ports located on the controller's base. When the controller is facing up, the DMX input port is on the left and the DMX output port is on the right.

USING RDM MODE:

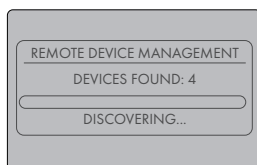
STEP ONE



- A. Power on device by pressing (Power Button)
- B. Using (DMX Channel +, Right Arrow) scroll to RDM
- C. Select RDM using (Confirm Key)

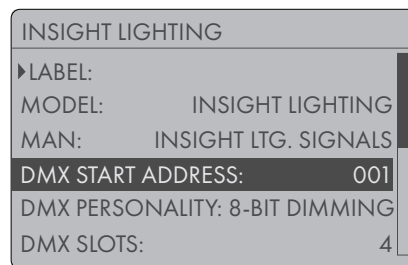
STEP TWO

A. The following screen will appear:



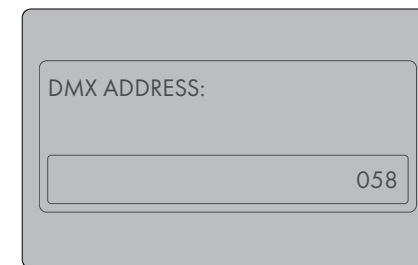
- B. Once loaded, the above screen will appear. Scroll to desired fixture to readdress using (Down Arrow)
- C. Select using (Confirm Key)

STEP THREE



- A. Scroll down to DMX Start Address using (Down Arrow)
- B. Select using (Confirm Key)

STEP FOUR



- A. Use and (Up and Down Arrows) to scroll to your desired DMX start address.
- B. Once you reach your desired DMX start address select using (Confirm Key)
- C. Return to home screen by using (Cancel, Back Button)
- D. Repeat steps one through four for the remaining fixtures.